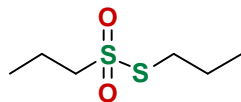


7.258

3.265
3.267
3.260
3.252
3.233
3.114
3.089
3.065

1.990
1.965
1.956
1.940
1.922
1.914
1.897
1.889
1.863
1.815
1.790
1.767
1.743
1.718
1.693
1.086
1.061
1.036
1.010
0.986
0.966
0.038



S-Propyl propane-1-sulfonothioate

Solvent: CDCl₃

Formula: C₆H₁₄O₂S₂ [MW: 182.3]

SP-13686 [CAS# 1113-13-9]

SpeedChemical® --- Speed Up Your Research

